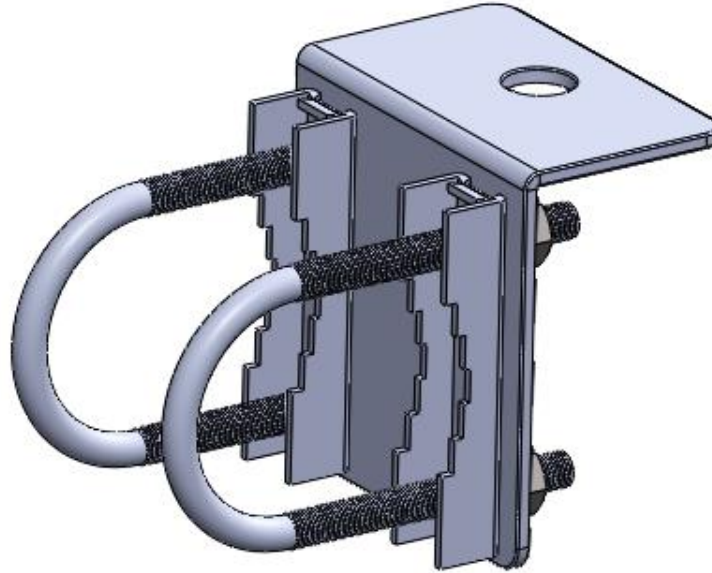


## WPANT50025-S1B

### Pole Mount Bracket for Antenna



### Description / Application

This is a pole mount bracket for antennas with N-type female connector. This entire assembly is made from stainless steel 304 grade, which is excellent for indoor and outdoor applications. This bracket can be mounted horizontally or vertically on a pole.

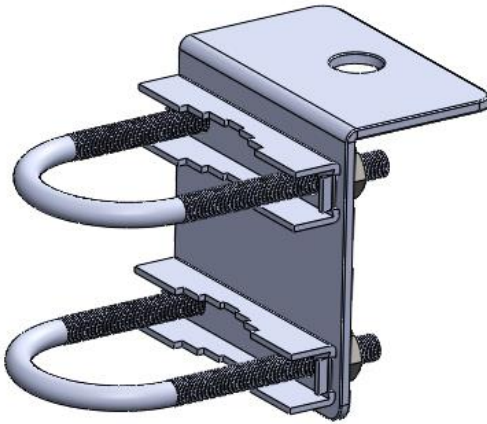
We can assist your engineers to optimize mounting positions for various antennas in your specific application and can further customize the antennas for your specific needs. Please contact [sales@worldproducts.com](mailto:sales@worldproducts.com) with your specific application requirements.

### Mechanical / Environmental Properties

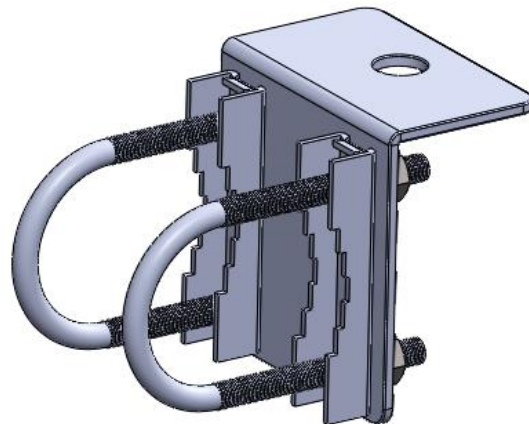
<b>U-bolt Type</b>	5/16in -18 TPI stainless steel 304
<b>U-bolt Dimension</b>	2.28in W x 4.25in H (58mm W x 107.95mm H)
<b>Washer/Lock Washer/ Hex Nut</b>	5/16in Stainless steel 304
<b>Bracket</b>	Stainless Steel 304
<b>Bracket Dimensions</b>	-see pages 3 below-
<b>Environmental</b>	Meets standards for UL 94V-0; Outdoor rated: Salt spray resistant, Wind and vibration resistant
<b>Hazardous Materials</b>	RoHS Compliant

Picture of Bracket Mounted on pole.

Vertical Mounting



Horizontal Mounting



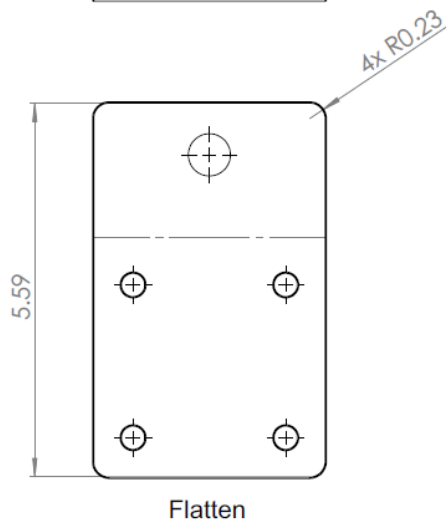
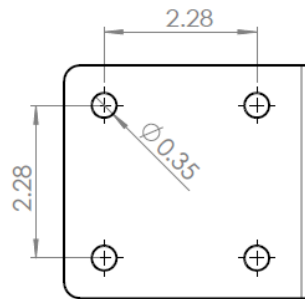
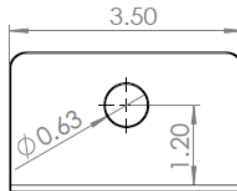
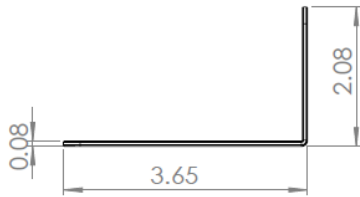
Picture of Bracket Mounted on pole.



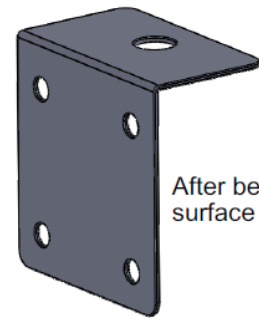
## Bracket & U-bolt Dimensions

Units are in Inches

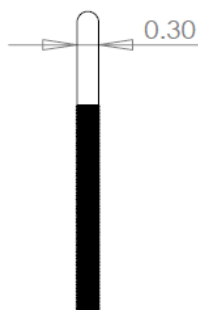
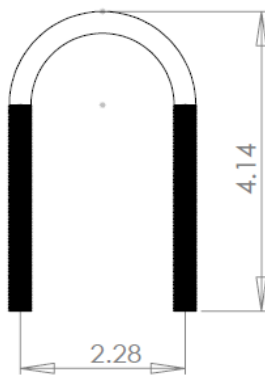
REVISIONS				
1	A	Extend Platform by 3/8"	12/9/14	APPROVED



After bend, Shiny surface finish is outside.



After bend, dull surface is inside.





19654 Eighth Street East  
P.O. Box 517  
Sonoma, CA 95476  
(707) 996.5201  
[www.worldproducts.com](http://www.worldproducts.com)  
[sales@worldproducts.com](mailto:sales@worldproducts.com)

# **APPROVALS**

## **Customer**

Approval Signature: \_\_\_\_\_

Name: \_\_\_\_\_

Title: \_\_\_\_\_

Approval Date: \_\_\_\_\_

## **World Products Inc.**

Approval Signature: \_\_\_\_\_

Name: \_\_\_\_\_

Title: \_\_\_\_\_

Approval Date: \_\_\_\_\_